

CONTAINER TILTER FABCON WITH SIDE PRESS

MADE IN UK



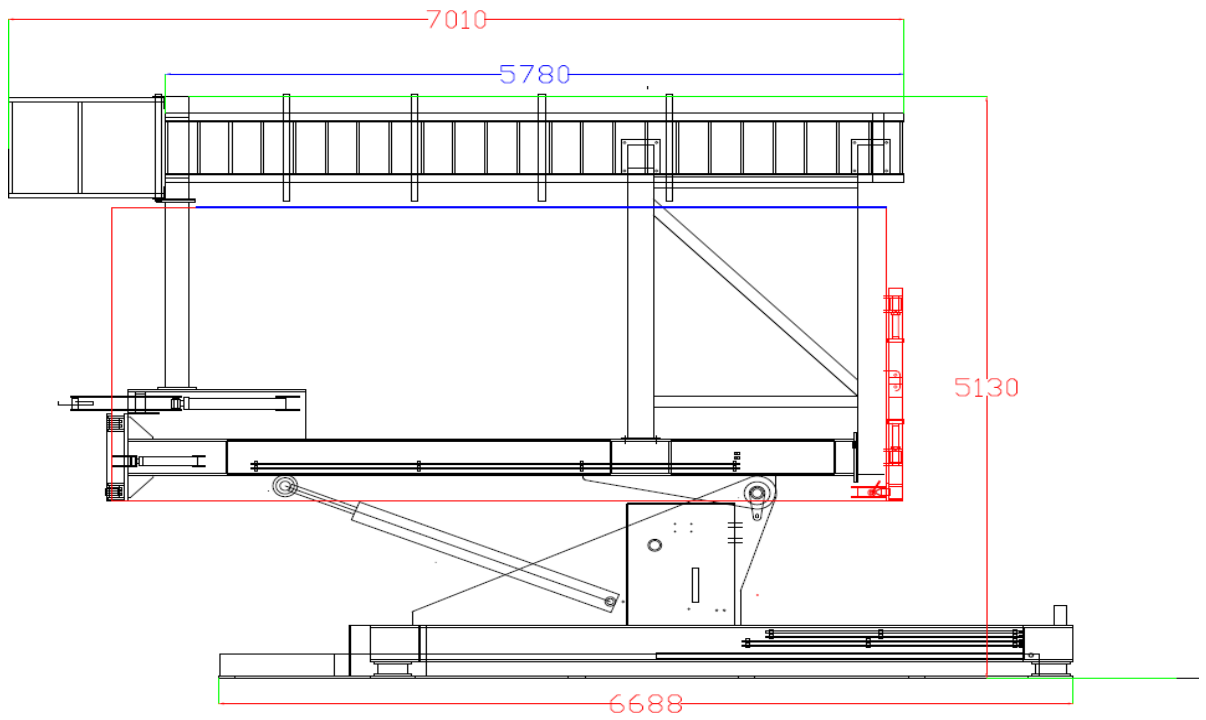


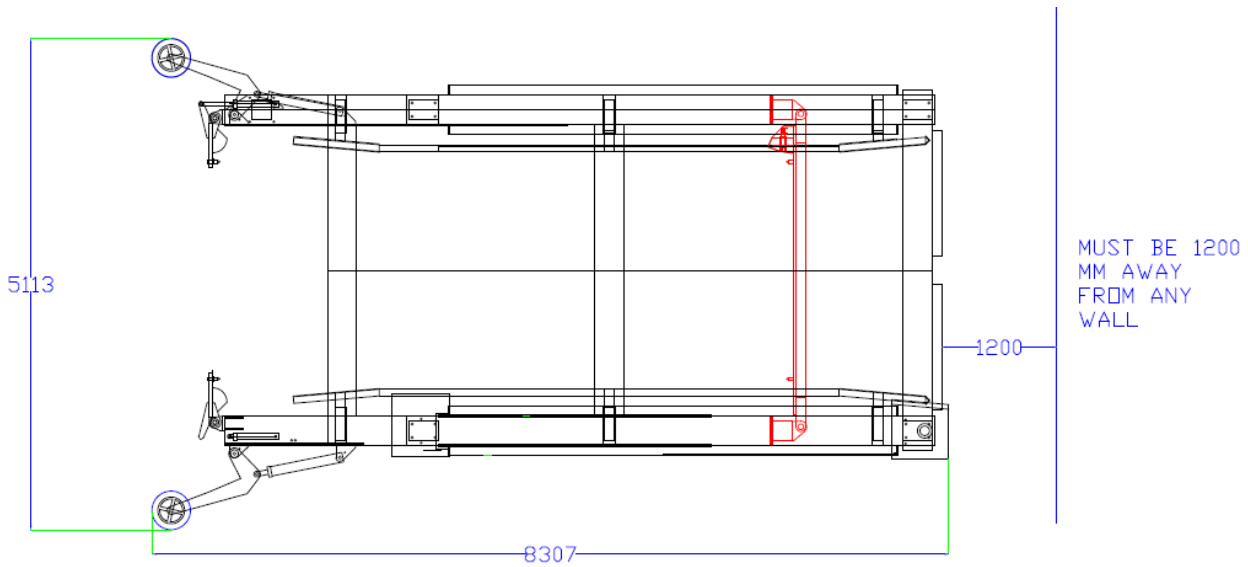
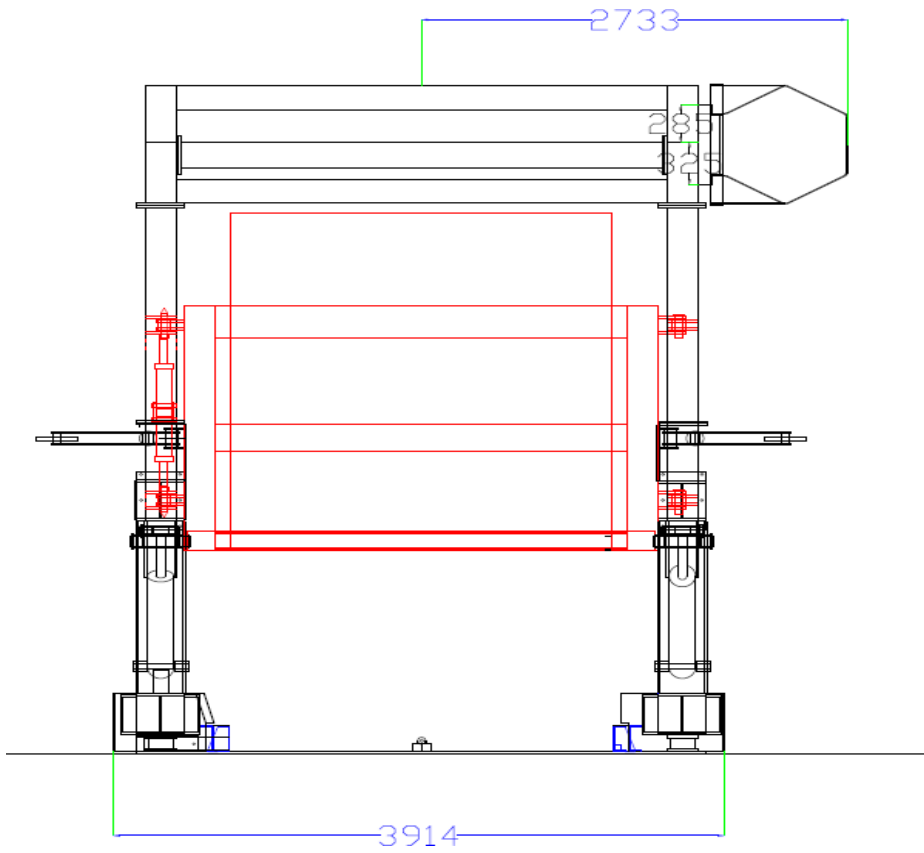






Dimensions





Scope of order:

- Built around a fully welded steel chassis primarily from 305 x 305 x 137 kg beams.
- The lifting arms are fabricated using 305 x 305 x 137 Kg beams, plated with 15mm steel plate to give an ultra high strength lifting frame.
- The pivot point is further reinforced with 15 mm plates which are bushed to accept the 50mm main pins.
- Actuated by 4 No 100 x 60 mm hydraulic cylinders from -10 degrees (to allow for different trailer heights) up to 90 degrees. Fitted with fail safe check valves.
- Hydraulically activated arms act as supports for the container doors as well as closing them prior to tilting container from upright to horizontal position. With the doors held firmly, shutting the doors can be latched safely from ground level.
- Hydraulics are powered from a 30 litre per minute geared pump. With 100 litre capacity reservoir fitted with filtration. And the hydraulic system has PRV protection.
- The unit comes complete with a radio controlled pendant remote unit, so the unit can be operated from the most advantageous and safe position. Manual override controls are also located on the machine as a backup system.
- The complete unit would be mounted onto 4 No Applied Weighing 'Safe Mount' 20,000 kg capacity compression load cells so that the container can be weighed in any position. The weight would be displayed via a LCD digital display for easy reading. The unit is completely self-contained and driven from a Perkins 3 cylinder 20 HP Diesel engine.

Container Tilter Details

Specification no.	281112-Tilter20
Country of Origin	UK
Description of Goods	1 NEW 20FT CONTAINER TILTER WITH SIDE PRESS COMPLETE, WEIGH SCALE, REMOTE CONTROL LADDER, POWER PACK
Installation	Extra
Quotation reference	EMAIL